

Biology 3090
Molecular, Cellular and Developmental Biology
Class Schedule, Spring 2021

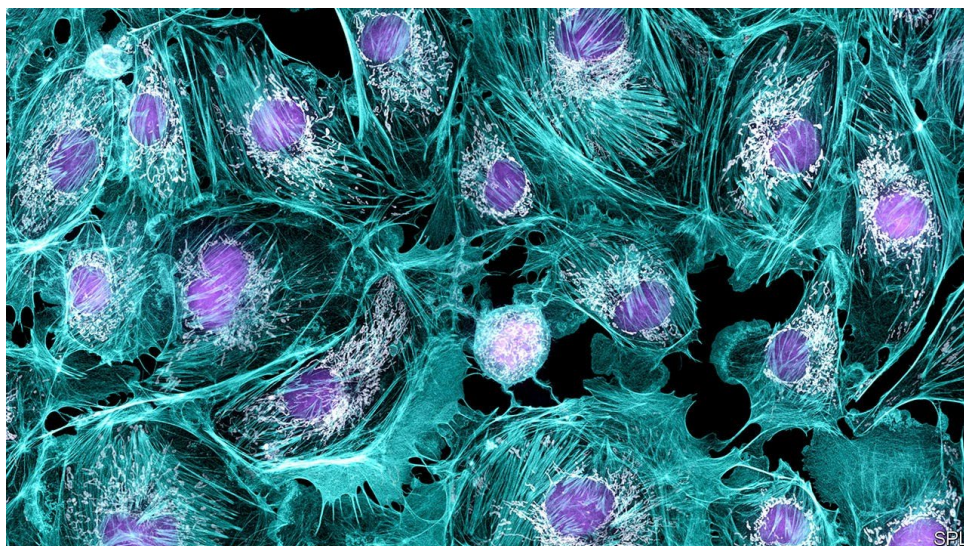
Topics:

- Chpt. 1 Cells: The Fundamental Units of Life
 - Chpt. 2 Chemical Components of Cells
 - Chpt. 3 Energy, Catalysis, and Biosynthesis
 - Chpt. 4 Protein Structure and Function
 - Chpt. 5 DNA and Chromosomes
 - Chpt. 6 DNA Replication and Repair
 - Chpt. 7 From DNA to Protein: How Cells Read the Genome
 - Chpt. 8 Control of Gene Expression
 - Chpt. 11 Membrane Structure
 - Chpt. 12 Transport Across Cell Membranes
 - Chpt. 15 Intracellular Compartments and Protein Transport
- Possibly other chapters will be discussed dependent upon time

Important Dates:

April 8th: No Class, on Friday Schedule

April 29th and 30th: Final Exam



Biology 3090
Molecular, Cellular and Developmental Biology
Syllabus, Spring 2021

Instructor	Thayne Sweeten, Ph.D.
E-mail	<i>thayne.sweeten@usu.edu</i> (this is the best way to contact me)
Phone	435-797-0795
Office hour	Fridays 10:00 – 11:00 am via Zoom. Email me to set up a Zoom office hour.
Required resources	<i>Essential Cell Biology, 5th ed. <u>with Smartworks5</u></i> . New York and London: W. W. Norton & Company.
Lecture sessions	Tuesday/Thursday: 3:00 – 4:15 pm

Course Goals

Cells are the foundation of life. This course will explore cells from a molecular perspective, investigating proteins, DNA, membranes, metabolism, cellular functions and more. Attention will be given to developmental aspects of cell biology. Understanding of the cell and its components will give student understanding of the underpinnings of life that are applicable to all areas of biology from ecology to human health.

Requirements

Students are expected to attend all lectures read the chapter covered in the lecture **prior** to class. Assignments, readings and exams will be given throughout the semester. This is a challenging course with a lot of interesting material to cover. Study time and effort are required.

Class Website

Course material such as the syllabus, assignments, readings, exams PowerPoint slides, grades and other information will be posted on the Utah State University Canvas web site provided for the course. Canvas will also be used for course announcements. To log in to Canvas go to online.usu.edu (no “www”). Your username is your Banner username (your “A” number) and your password is your BANNER password. You should see BIOL 3090 as one of your courses. Just click on that and you will be at the course home page. Most lectures will be recorded using Zoom and posted on the course website. At time Zoom recording do not work due to technical issues and therefore will not be available. If you have problems viewing recordings please contact the USU IT Service Desk:
Phone: 435.797.HELP (4357) Toll Free: 1.877.878.8325
Email: servicedesk@usu.edu

Exams

Online tests using Proctorio will be given typically following the completion of every two chapters and will cover the content of those chapters. **The dates of these tests will be announced in class near when the chapters will be finished.** When we are getting close to finishing a “second” chapter expect a test soon. A comprehensive final exam will be given as well. Exams are primarily multiple-choice with some true/false, fill-in-the-blank or short-answer format questions. Please see the Getting Started with Proctorio-Student Guide in the modules on Canvas to prepare for taking online exams.

Grading

There will be **no** extra credit or special projects to improve your grade, please do not ask. Students can discuss exam scores from midterms up until the last office hour of the semester, after then only the final exam will be discussed. Your final grade will be determined in the following manner:

- Chapter Tests 60%
- Smartwork5 Problem Sets 15%
- Development Assignments 5%
- Final Comprehensive Exam 20%
100%

Grade breakdown

Percentage	Grade
100 – 93%	A
< 93 – 90%	A-
< 90 - 87%	B+
< 87 – 83%	B
< 83 – 80%	B-
< 80 – 77%	C+
< 77 - 73%	C
< 73 - 70%	C-
< 70 - 67%	D+
< 67 - 60%	D
< 60%	F

COVID-19 Classroom Protocols

In order to continue to provide a high-standard of instruction at USU, and to limit the spread of COVID-19 during the pandemic, students are asked to follow certain classroom protocols during the fall 2020 semester. These protocols are in place not only for your safety but also the safety of the rest of the campus community. You will be asked to clean your desk area at the start of each class, sit in designated seats, wear face coverings and follow dismissal instructions. There may be individual medical circumstances that prevent some students from using face coverings. These circumstances will be rare, but if they do exist, we ask that everyone be respectful. It is imperative that we each do our part so that on-campus instruction can continue.

Unacceptable Classroom Behavior

Behavior that disrupts the classroom environment will be discouraged.

1. Once class has started, **cell phones should be silenced** and no ring tones or conversations are permitted. Use of laptop computers is permitted only for purposes related to the class.
2. Once class has started, **talking among students is strongly discouraged**. If you need to talk, please leave the class and conduct your conversation outside. If students persist in talking among themselves during class, they will be asked to visit my office and receive a written notice. If talking continues, students will be asked to leave the room and possibly the class so that other students can benefit from the limited amount of class time available. I take this seriously!

Withdrawal Policy and "I" Grade Policy

Students are required to complete all courses for which they are registered by the end of the semester. In some cases, a student may be unable to complete all of the coursework because of extenuating circumstances, but not due to poor performance or to retain financial aid. The term 'extenuating' circumstances includes: (1) incapacitating illness which prevents a student from attending classes for a minimum period of two weeks, (2) a death in the immediate family, (3) financial responsibilities requiring a student to alter a work schedule to secure employment, (4) change in work schedule as required by an employer, or (5) other emergencies deemed appropriate by the instructor.

Honor Code Policy

As stated in The Student Code, "Each student has the right and duty to pursue his or her academic experience free of dishonesty. The Honor System is designed to reinforce the higher level of conduct expected and required of all Utah State University students." Upon admission to the university, you agreed to abide by this Honor Code by signing the Honor Pledge, which reads: "I pledge, on my honor, to conduct myself with the foremost level of academic integrity." Complete academic honesty is expected in this course. Cheating on exams or plagiarism on written assignments will result in a failing grade and may result in further action according to University policy.

Accommodation for Disabilities

Students with ADA-documented physical, sensory, emotional or medical impairments may be eligible for reasonable accommodations. Veterans may also be eligible for services. At Brigham City, contact Jill Rasmussen, Room 170B, (435) 734-2277 ext 246. At other RCDE sites, contact your advisor. All accommodations are coordinated through the Disability Resource Center (DRC) in Room 101 of the University Inn on the Logan Campus, (435)797-2444 voice, (435)797-0740 TTY, or toll free at 1-800-259-2966. Please contact the DRC as early in the semester as possible. Alternate format materials (Braille, large print or digital) are available with advance notice.

Grievance Process

Students who feel they have been unfairly treated...may file a grievance through the channels and procedures described in the Student Code:

<http://www.usu.edu/studentervices/pdf/StudentCode.pdf#page=3> (Article VII. Grievances, pages 27-36).

Communications via email

Email is an official form of communication at USU. Any communication to you about this course will be to the email address you have listed in ACCESS as your preferred address. You are responsible for any information conveyed to you at that email address. To make sure that the university is using the email account you prefer, do the following:

- At the USU website, click on the link "MyUSU" at the top right of the page
- Under "Access" click on the link "Login to Access (Banner)"
- Log in using your A number and Password
- Click on "Personal Information"
- Click on "Update E-mail Addresses"
- Follow the short instructions to update your preferred email address

It is your responsibility to check your email account regularly.

Diversity Statement

Regardless of intent, careless or ill-informed remarks can be offensive and hurtful to others and detract from the learning climate. If you feel uncomfortable in a classroom due to offensive language or actions by an instructor or student(s) regarding ethnicity, gender, or sexual orientation, contact one of the following: at USU Brigham City, contact Jill Rasmussen, Room 170B, (435) 734-2277 ext 246; at other RCDE sites, contact your advisor, or; Michelle Bogdan, Director The Access and Diversity Center (435) 797-1729 michelle.bogdan@usu.edu; James Morales, Vice President of Student Services (435) 797-1712 james.morales@usu.edu; Ann Austin, Vice Provost for Faculty Development and Diversity, ann.austin@usu.edu; Maure Smith, GLBTA Services, maure.smith@usu.edu; Steven Russell, Student Advocate (435) 797-1720 s.r.@aggiemail.usu.edu. You can learn about your student rights by visiting: www.usu.edu/student-services/studentcode.