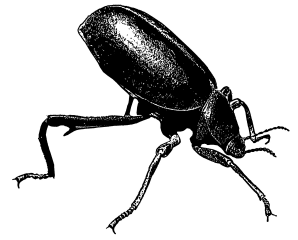


**Biology 1625, General Biology II Laboratory  
Spring Semester, 2018, Tooele Regional Campus**

---



**Class Times:** Lab – Wednesday 5:00- 7:45 science building 205

**Instructor:** Dr. Joseph Wilson  
Office: science building 234  
email: [joseph.wilson@usu.edu](mailto:joseph.wilson@usu.edu)

**Office Hours:** I do not have scheduled office hours. I am, however, available most days so email me and we will set up a time to meet.

**Required Texts:** None

---

**Relationship between Lab and Lecture:** Lab and lecture work together to form the integrated course of Biology II. Laboratories offer learning opportunities not possible in lecture..

**Laboratory Learning Objectives:**

- ◆ Gain experience in applying the scientific method
- ◆ Better understand the experimental approach to biology
- ◆ Be introduced to the primary scientific literature
- ◆ Improve skills in applying mathematics to biology
- ◆ Gain experience working with basic laboratory apparatus and procedures

**Grading:** Your grade in lab will come from:

- ◆ **Weekly lab activities. You will be graded both on attendance and participation.**

Each lab activity is worth 15 points shown in the table on the next page and the lab schedule and reading assignment due dates are given on the last page of this syllabus. ***Labs begin the first week of class January 11.***

**Lab group assignments** will ask you to answer questions or perform calculations related to the lab. These must be **submitted before leaving the lab**. Group assignments will be completed by working with your lab group, with one assignment submitted per group and one score issued to everyone in the group. These assignments are designed to help you learn the important concepts of each lab.

**Questions about any grades** you receive must be handled promptly. Any disputes about scores need to be made *within one week* of that score being made available to your lab section. After this time the recorded score stands.

**Attendance and Excused Labs:** Attendance in lab is mandatory. If you miss a lab you will not receive points for the pre-quiz or the group assignment. If you need to miss your regularly scheduled lab for what you believe is a valid reason, you must inform your Dr. Wilson ***before***

your lab starts. Because we do not have the opportunity for make-up labs, your lowest lab score will be dropped at the end of the semester (this is equivalent to you being able to miss one lab).

**ADA Compliance Statement:** Students with physical, sensory, emotional or medical impairments may be eligible for reasonable accommodations in accordance with the Americans with Disabilities Act and Section 504 of the Rehabilitation Act of 1973. All accommodations are coordinated through the Disability Resource Center (DRC) in Room 101 of the University Inn, 797-2444 voice, 797-0740 TTY, or toll free at 1-800-259-2966. Please contact the DRC as early in the semester as possible. Alternate format materials (Braille, large print or digital) are available with advance notice. Please note, however, that participation is required in lab for all students.